



## DokaXdek family revolutionizes slab construction

Doka presents prototype for semi-automated forming at this year's bauma

**Doka, the international formwork and scaffolding expert, is unveiling a new slab-formwork system family at bauma 2022. The revolutionary system, DokaXdek, consists of three complementary elements – the DokaXdek table, DokaXdek panel, and DokaXdek I-frame. This highly versatile system has been designed to address current and future issues such as safety, ergonomics and economy on construction sites worldwide. Uniquely the system has been developed in parallel to seamlessly combine for maximum versatility, streamlined work processes and increased cost-effectiveness. It also impresses as a stand-alone system.**

Robert Hauser, CEO Doka: "With DokaXdek, we are launching a floor-slab formwork system that covers the requirements of our customers from small to large construction sites."

### The new dimension in slab construction

The new **DokaXdek table** offers all the usual advantages of a slab table, such as speed, safety and economy – especially on medium to large construction sites. With a robust, hot-dip galvanized steel frame, the DokaXdek table has impressive durability, flexibility and handling. The slab table is available in four different formats of four or five meters in length, and two and 2.5 meters in width. The swivel head ensures a strong connection between the DokaXdek table and EUREX floor props. It also adds flexibility, as it can be bolted in both longitudinal and cross profiles.

The DokaXdek table is a strong part of the DokaXdek family and can lift slabs up to 112 cm in thickness. A special feature is the 12 cm height which saves space for easier storage and transportation. The low profile format also expresses Doka's commitment to sustainability. Up to three times as many tables can be transported on a single truck than before, which reduces CO<sub>2</sub> emissions as well as saving time and money. The slab table from the DokaXdek family can be coupled modularly and seamlessly to all DokaXdek handset and Dokaflex systems.

The **DokaXdek panel** is the flexible and lightweight two-person handset formwork system that can be set up safely from the ground. It consists of a robust aluminum frame with a resistant powder coating and highly durable Xlife panel for many and, consistently good concrete results. The low weight and the size of 1 x 2 meters make the system easy to handle, thereby improving safety and easing manual transportation around the construction site. The flexible support head also gets a high score. It can be mounted anywhere on the panel frame, and in combination with the Doka floor prop provides the necessary support. The DokaXdek panel also offers a great deal of flexibility in assembly. Panels can be erected lengthwise and crosswise, and can be swiveled up sideways. By adding just one other prop, the system can handle slab thicknesses of up to 40 cm in standard use and even up to 65 cm. Safety has been a key focus of development at Doka for a long time. The smart up-lift protection secures the panels and the entire system during handling and in windy conditions.

The **DokaXdek I-Frame** represents a completely new innovation; a prototype will be shown for the first time at bauma 2022. Weighing less than 15 kg, the I-Frame delivers improved ergonomics and reduced physical strain for workers. It can easily be combined with the DokaXdek panel, and enables increased geometrical flexibility. It also comes with a flexible support head and an integrated uplift protection, for improved construction site safety, flexibility and ergonomics. The DokaXdek I-Frame will be on the market in 2023.



Doka has taken a giant step towards automation on the slab formwork construction site by developing the **DokaXbot**. A brand-new prototype of the DokaXbot will be on display at bauma. Safe and fast slab formwork erection for heights of up to 5.2 m and forming at the slab edge are effortless for the DokaXbot. The DokaXbot is door-entry capable and therefore universally applicable. An operator pre-positions it in the correct location. The DokaXdek panels and DokaXdek I-frames are semi-automatically lifted to the selected height and placed in position. In this way, the DokaXbot reduces the workload of the site crew and thus significantly increases the crew's safety and productivity. "With the DokaXbot, we have a real game changer up our sleeve – slab forming will become more automated. In this way, we are unlocking new potential for our customers in terms of cost-effectiveness, while focusing more than ever on people and their needs in terms of ergonomics and safety," explains Robert Hauser.

The DokaXdek system, with the DokaXdek table and DokaXdek panel, which represents one of Doka's largest innovation projects, will be available in Germany, Austria, Norway and Sweden from the end of 2022 and will roll out internationally in 2023.

DokaXdek will be officially launched at bauma 2022. Visitors will be able to experience the **DokaXdek table**, **DokaXdek panel**, **DokaXdek I-frame** and **DokaXbot** at the Doka Booth FN.421-FN.423.

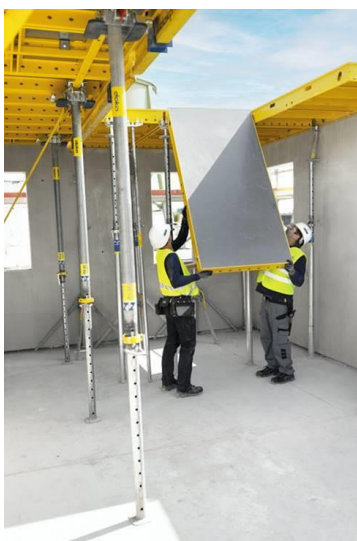
#### Photos:

Please include details of copyright for publication.



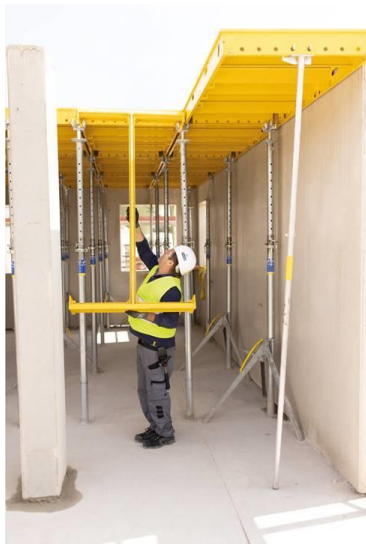
The DokaXdek table can be flexibly combined with the DokaXdek panel and DokaXdek I-frame\* (\*demo version).

Photo: DokaXdek table.jpg  
Copyright: Doka



The DokaXdek panel is a lightweight and flexible two-person element system that can be safely assembled and disassembled from the ground.

Photo: DokaXdek panel.jpg  
Copyright: Doka



The DokaXdek-I frame (demo version) can form slabs ergonomically and safely in a one-person setup.

Photo: DokaXdek-I frame.jpg

Copyright: Doka



Safe and fast forming of slabs at heights of up to 5.20 m and forming at the slab edge is no problem for the DokaXbot (demo version).

Photo: DokaXbot.jpg

Copyright: Doka



DokaXdek element in action at ARGE Quadrill, Linz – Austria

Photo: ARGE Quadrill\_Linz.jpg

Copyright: Doka



DokaXdek table in use at ARGE  
Garnmarkt, Götzis – Austria

Photo: ARGE Garnmarkt Götzis.jpg  
Copyright: Doka

**About Doka:**

Doka is a world leader in providing innovative formwork, solutions and services in all areas of construction. The company is also a global supplier of well-thought-out scaffolding solutions for a varied spectrum of applications. With more than 160 sales and logistics facilities in over 60 countries, Doka has a high-performing distribution network for advice, customer service and technical support on the spot and ensures that equipment is swiftly provided – no matter how big and complex the project. Doka employs 6,800 people worldwide and is a company of the Umdasch Group, which has stood for reliability, experience and trustworthiness for more than 150 years.

**Press Contact:**

Alexandra Weidinger  
Head of External Communication  
Doka GmbH  
**M** +43 664 62 94 111  
[alexandra.weidinger@doka.com](mailto:alexandra.weidinger@doka.com) | [www.doka.com](http://www.doka.com)